



Sangeeta Industries

**YOUR PARTNER FOR MANUFACTURING
SERVICES**

WE ARE AN ISO/TS 16949:2009 AND AN ISO-9001:2008 CERTIFIED ORGANIZATION
WE ARE AN IATF 16949:2016 CERTIFIED ORGANIZATION

A brief about our past & present...



- SANGEETA INDUSTRIES was formed as on 13th February, 1989
- The objective was to cater to the needs of OEM's in the engineering field by manufacturing and supplying sheet metal components.
- The company is recognized as a quality conscious company striving to provide best services to its customers, and is uncompromising in terms of product quality and on-time delivery.
- Total No. of machines -150+ , Including Power Press , VMC , Wire Cut , Tool development machine , Expanded Liner , Narrow blanking line, CNC Pipe bending and a complete weld shop,
- As the organization grows it is moving towards professionalizing itself further from a proprietorship to private limited
- Dedicated team of around 150+ members
- It is spread over almost 2 acres



The vision and mission we adhere to...

Vision

“To enable our clients to explore new areas of opportunity and expand perspectives in providing quality products at an optimum cost”

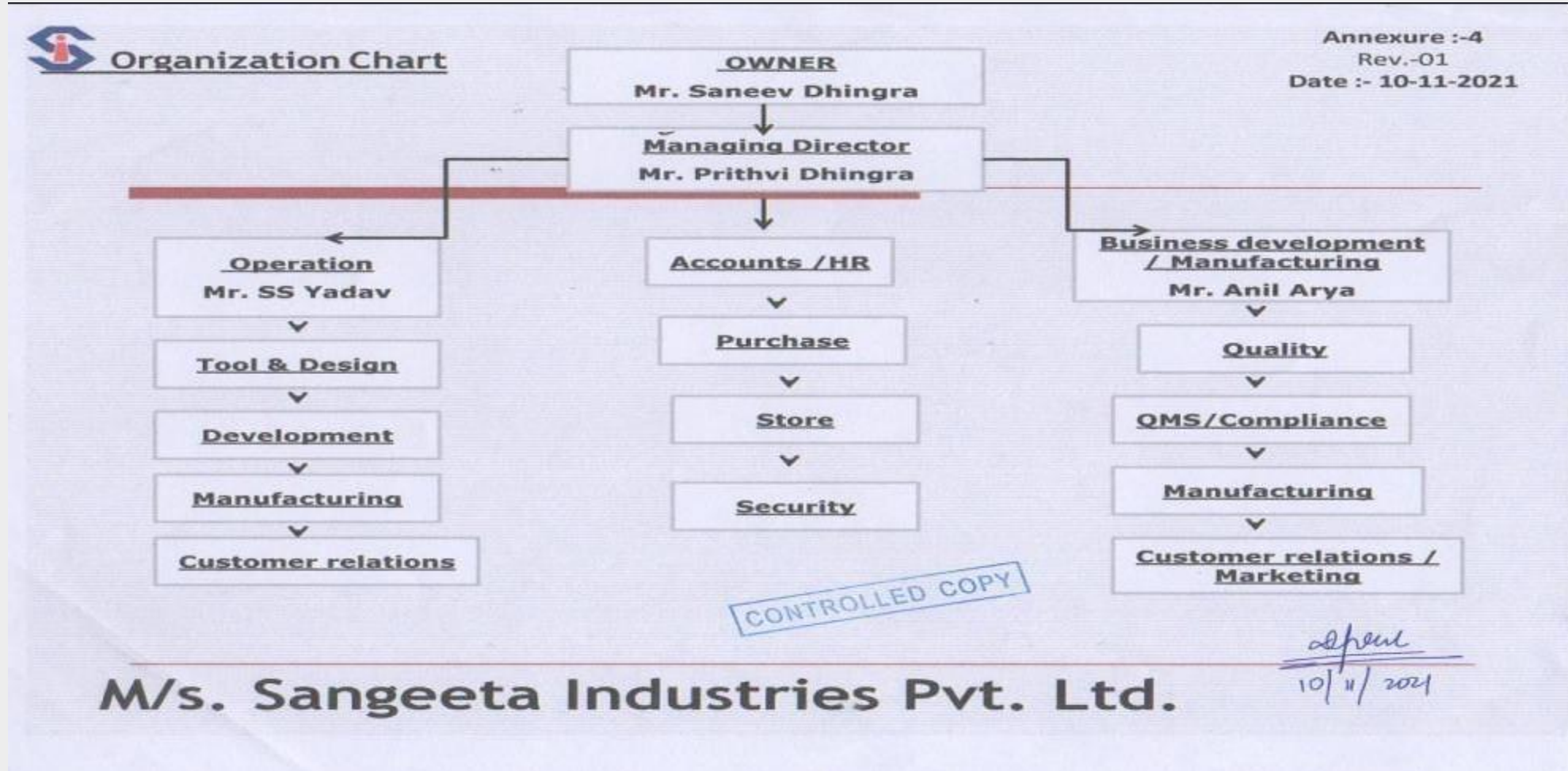


Mission

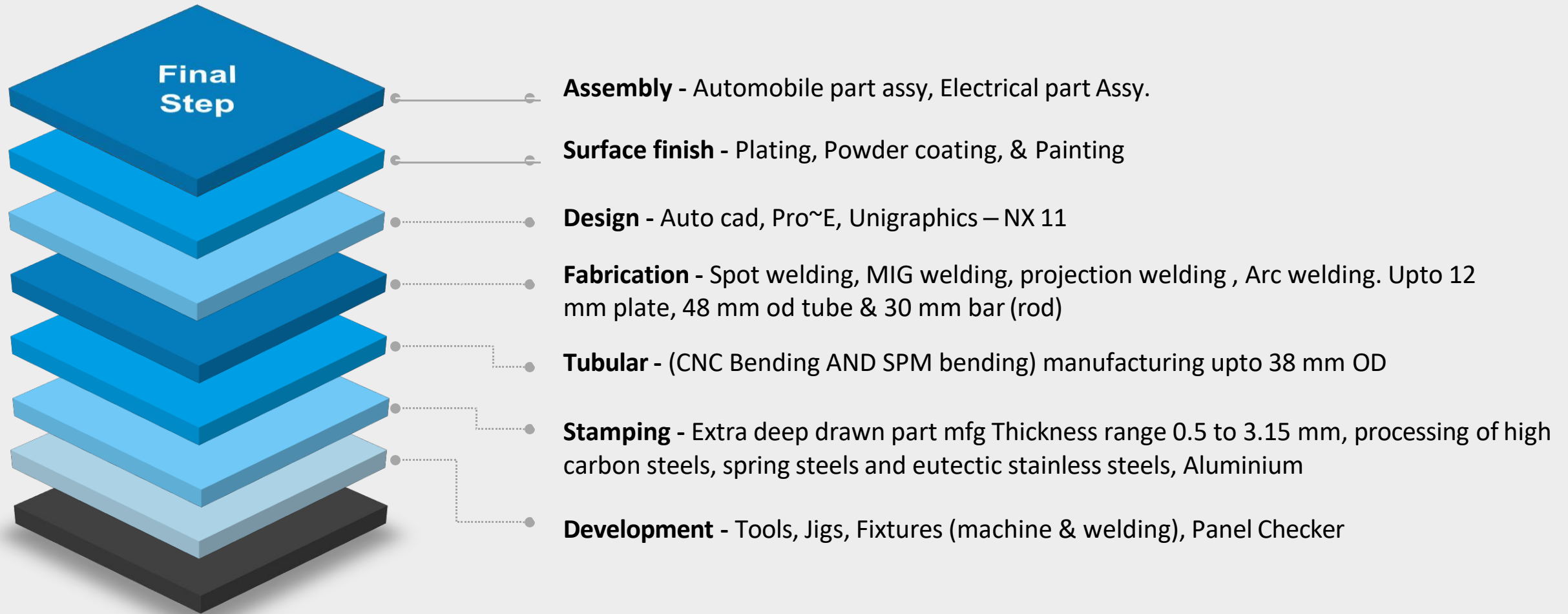
“To be leaders in providing comprehensive customized manufacturing of sheet metal & fabricated components to clients”



Organization Structure



On our vision road we have already developed our competency on...



This competency has been achieved on developing & strengthening the pillars of..

Team

- Good team-mix of young enthusiasm & old experience
- Team of ~150 members with 10+ engineers having a collective experience of 100+ years

Infrastructure

- 1 unit
- Spread over 64000sqft, with an integrated facility to service our customers.
- 150+ machines,
- Modern in-house tool room & Separate electroplating zone have plating and powder coating plants

Systems

- IATF 16949:2016 certified organization
- Lean Trained
- Product & Process Control through SPC
- Defect prevention
- Continual improvement

Service

- Customer consciousness
- Account Management concept
- Quality orientation
- Management focus
- Standard raw material

Product Mix

- Sectoral Mix
- White Goods
- Automobiles
- Material Mix
- CR, HR, GPSP, Alu, SS, Tubular, varied thickness
- Process Mix
- Stamping, Tubular, Surface Treatment, Assembly
- Large tool, Unique tooling etc.



And their continuous upgrade through training...

Manning & Training - Presently we have right mixture of workforce including skilled and semiskilled.

Development - A Design & Development Head supported by a Tool Room Head, Designers and a well manned Toolroom.

Production - Production is managed by a Production head supported by a team of supervisors

Quality - A well trained & resourced Quality function with a QA, supported by a team of QC

Assembly - A separate team for assembly and wiring



Ensuring we have a ***System*** that meets the latest

CERTIFICATE

This is to certify that

Sangeeta Industries Pvt. Ltd.
Plot No. 109, Sector - 25
Faridabad - 121 004
Haryana
INDIA


has implemented and maintains a **Quality Management System.**

Scope:
Manufacture of Sheet metal and Fabricated Components.

An audit, conducted and documented in a report, has verified that this quality management system fulfills the requirements of the following International Automotive Standard:

IATF 16949:2016
(without product design)

Certificate registration no. 50253005 IATF16
Issuing date
This certificate is valid until
IATF No.


2-IAO-QMC-01001

For and on behalf of DQS

Nurani S. Venkatasubramanian
Director-Corporate Automotive Program, DQS Holding GmbH

Michael Drechsel
Managing Director, DQS Holding GmbH

IATF Contract Office: DQS Holding GmbH, Konrad-Adenauer-Allee 8-10, 61118 Bad Vilbel, Germany

Bitte Änderungen farblich kennzeichnen
Please highlight any changes color-coded

2017-03-08



To serve these reputed clients in different sectors...

White Goods/ Home appliances



Automobile



**HERO
MOTORS**



Power



Air Conditioning



Sangeeta Industries

We serve our clients through a wide portfolio of products...Tubular parts



We manufacture around 200 components for multiple clients across multiple sectors



We serve our clients through a wide portfolio of products...illustrative samples

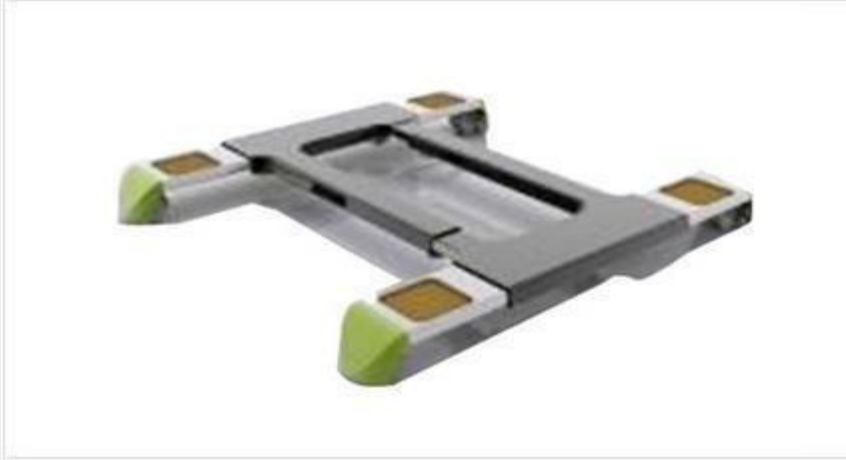


Part Name-Upper bkt. Customer – M2Wheeler



Part Name- Base rear Customer – M2Wheeler

We serve our clients through a wide portfolio of products...illustrative Products



- ✓ Self / Our input designed product
- ✓ Moves across X & Y axis

We manufacture around 200 components for multiple clients across multiple sectors



We serve our clients through a wide portfolio of products...illustrative samples



1

Part Name- Muffler Customer-CAPAROOEM

We manufacture around 200 components for multiple clients across multiple sectors



Sangeeta Industries

We serve our clients through a wide portfolio of products...illustrative samples



1

Part Name- Mounting plate Customer - Whirlpool



2

Part Name- Front cross pc Customer - Whirlpool



We serve our clients through a wide portfolio of products...illustrative samples



1

Part Name- Muffler Customer-CAPARO OEM

We manufacture around 200 components for multiple clients across multiple sectors



Sangeeta Industries

We serve our clients through a wide portfolio of products...illustrative samples



- Deep draw component
- Calibrated to the size of bearing fitting

We manufacture around 200 components for multiple clients across multiple sectors



Sangeeta Industries

We serve our clients through a wide portfolio of products...illustrative samples



- LV switchgears
- Complete assembly involving ~ 10,000 BOP's over 200+ categories

We manufacture around 200 components for multiple clients across multiple sectors



We serve our clients through a wide portfolio of products...illustrative samples



- Mass produced
- SPC controlled
- Heart of the refrigerator

We manufacture around 200 components for multiple clients across multiple sectors



We serve our clients through a wide portfolio of products...illustrative samples



Part Name- Fender Side
Customer-CAPARO OEM

We manufacture around 200 components for multiple clients across multiple sectors



We serve our clients through a wide portfolio of products...illustrative samples



Part Name- Clutch padel
Customer-CAPARO
OEM

We manufacture around 200 components for multiple clients across multiple sectors



Appliances parts



Part Name- Freezer Customer -
Whirlpool



Part Name- Stabilizer cover
Customer- C&S

Two wheeler parts



Part Name- Gusset head pipe Customer-NMPL



Part Name- Bridge Fork Customer-HERO



Part Name- Alternator cover Customer-CAPA



Part Name- Stay A Muffler Customer-NMPL



Frame Parts



Part Name- Bkt . Axle
Model-KWPA
Customer-NMPL
OEM- Honda



Part Name- Bkt . Axle
Model-KWPA
Customer-NMPL
OEM- Honda



Part Name- Bkt . Axle
Model-KWPA
Customer-NMPL
OEM- Honda



Part Name- Bkt . Axle
Model-KWPA
Customer-NMPL
OEM- Honda



Part Name- Bkt . Axle
Model-KWPA
Customer-NMPL
OEM- Honda



Part Name- Bkt . Axle
Model-KWPA
Customer-NMPL
OEM- Honda

Frame Parts



Part Name- Bar Pillion
Foot Rest Model-Suzuki
Customer-NMPL OEM-
Suzuki



Part Name- Side Guard
Upper Model-Suzuki
Customer-NMPL OEM-
Suzuki



Part Name- Swing Arm
Model-SUZUKI Customer-
NMPL OEM-SUZUKI



Part Name-Side Guard
Lower Model-Suzuki
Customer-NMPLOEM-
Suzuki



Part Name- Plate Front
Bumper Model-Suzuki
Customer-NMPL OEM-
Suzuki



Part Name- Stay RR
Model-Customer-NMPL
OEM- HONDA

Filter parts



Expanded liner
6'
7"
8"



Mounting clamp 7"

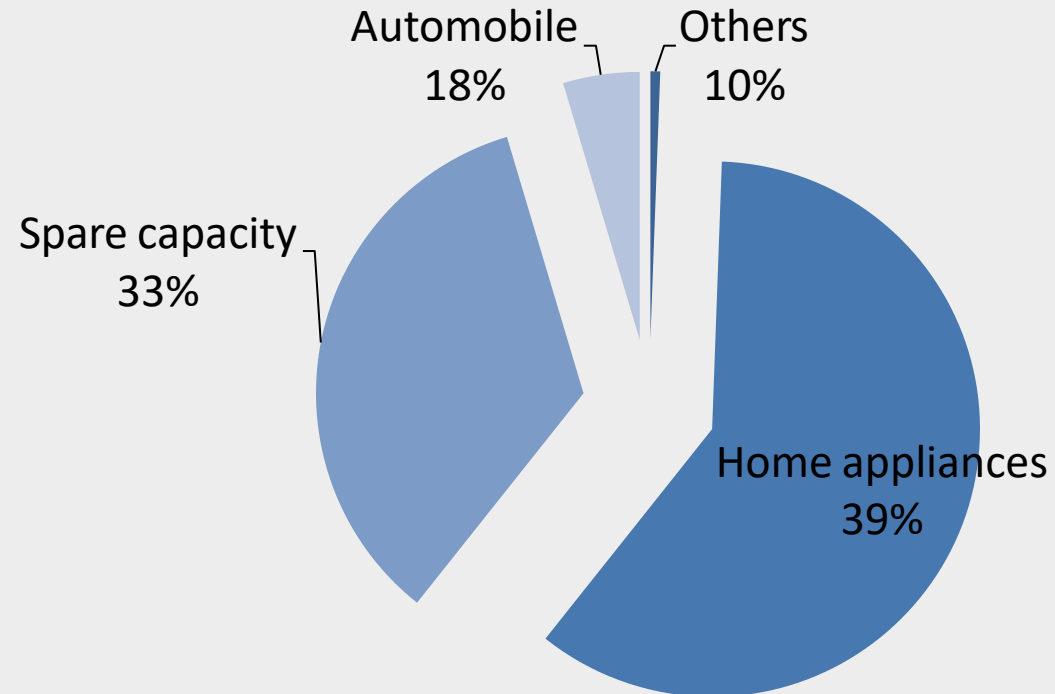


Mounting clamp 6" 7" 8"

Automatic Expanded Liner Machine



Capacity Vs spare capacity



Capacity

Home appliances – 39%
Automobile -18%
Others – 10%
Spare capacity – 33%



Infrastructure



With over 64000 sq ft of area and 322 million strokes per shift, we have the requisite infrastructure to meet the end-to-end need of our clients



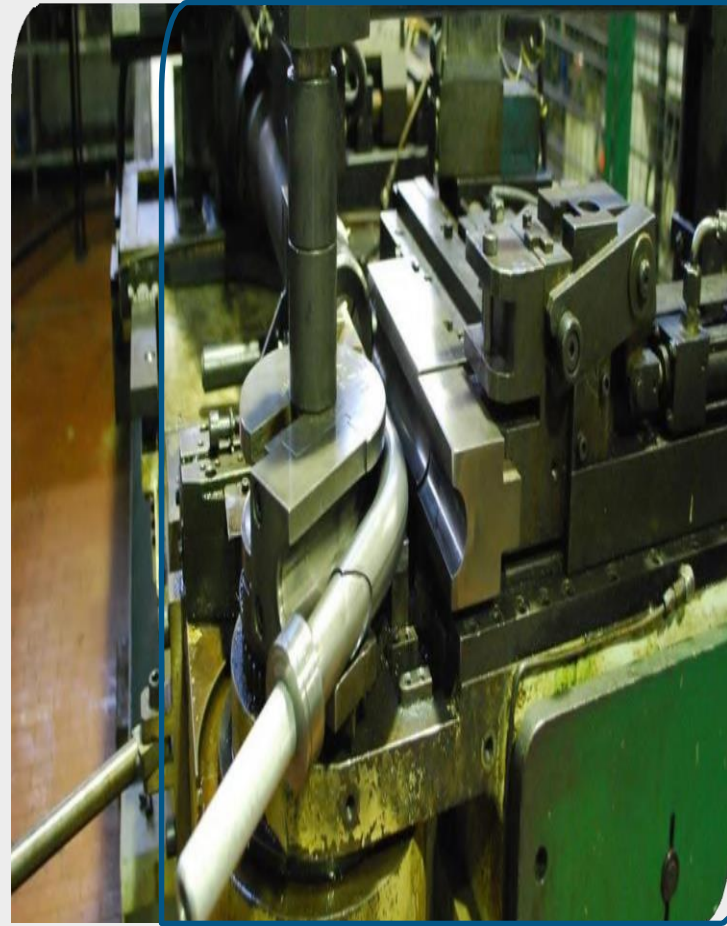
Infrastructure....continued

Press Shop	Capacity	Quantity
Power Press	400 T	1
Power Press	315 T	1
Power Press	250 T	2
Power Press	160 T	2
Power Press	150 T	4
Power Press	110T	2
Power Press	100 T	9
Power Press	80 T	2
Power Press	75 T	4
Power Press	63 T	4
Power Press	50 T	30
Power Press	30 T	27
Power Press	10 T	6
Shearing M/C	2*1250	1
Shearing M/C	6*2500 mm	1
Others		50



Infrastructure....continued

3AXIS CNC PIPE BENDING M\C



Pipe bending facility

- 2 Nos. – CNC 3 Axis Tube bending dia. up to 38mm X 3 mm

In-house Tool Development Room

Tool Assy
Area



Tool Area



**Tool
Development
Room**

Vertical
Milling
Centre



Wire Cut

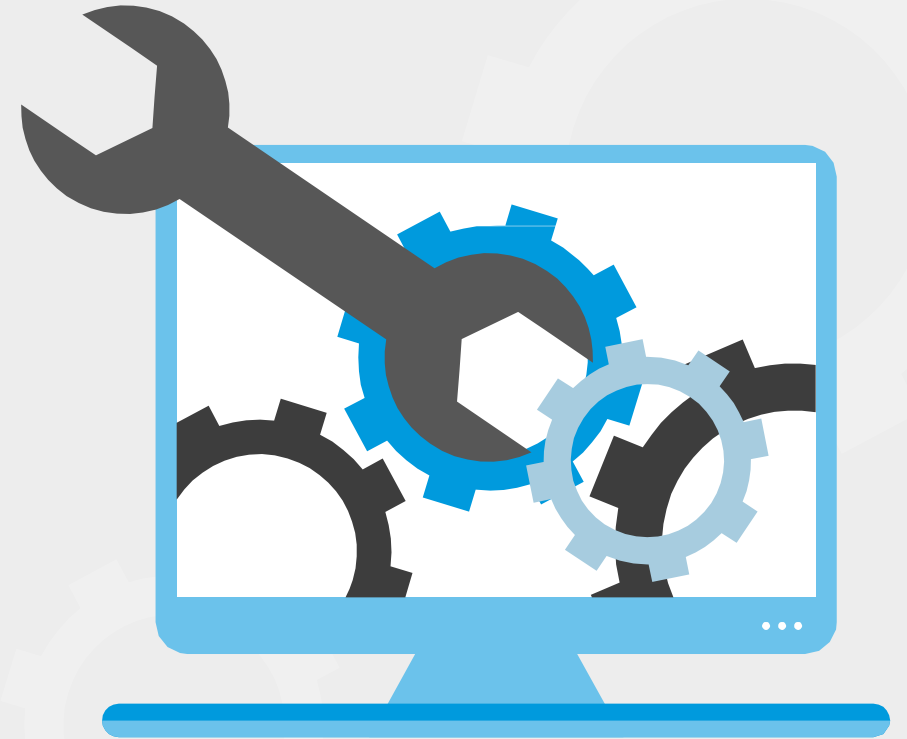


Engineering and Design

Design using AutoCAD and 3-D Modeling

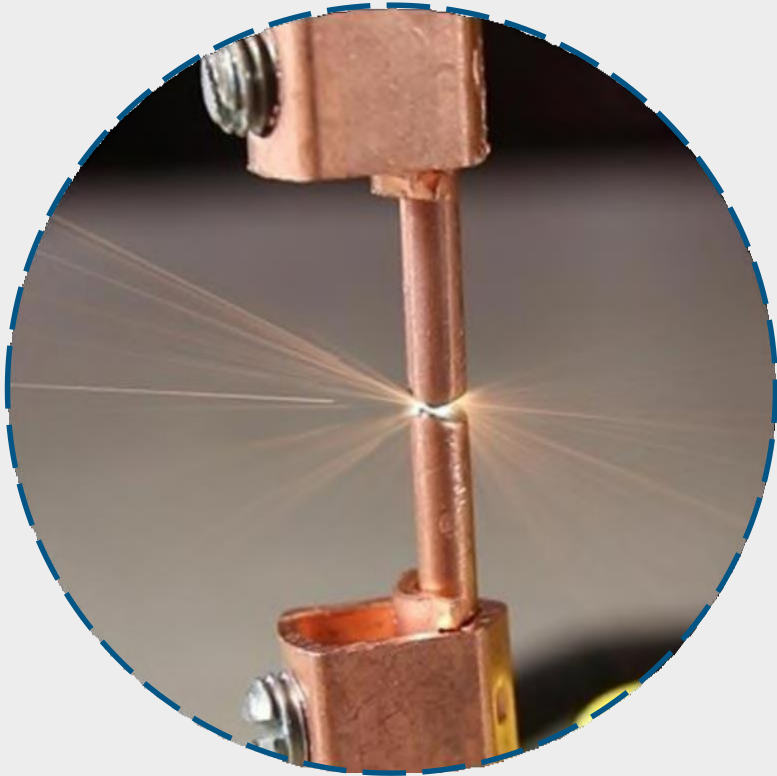
A well equipped Tool Room having:

- Development facility
- 1 - VMC – 3 axis – TAL make
- 1 - Wire cut – Ultima
- 2 - Lathe's – 8 feet & 6 feet
- 4 - surface grinders
- 2 - M1TR



Welding Facilities

We have the most comprehensive Welding shop which includes facilities for:



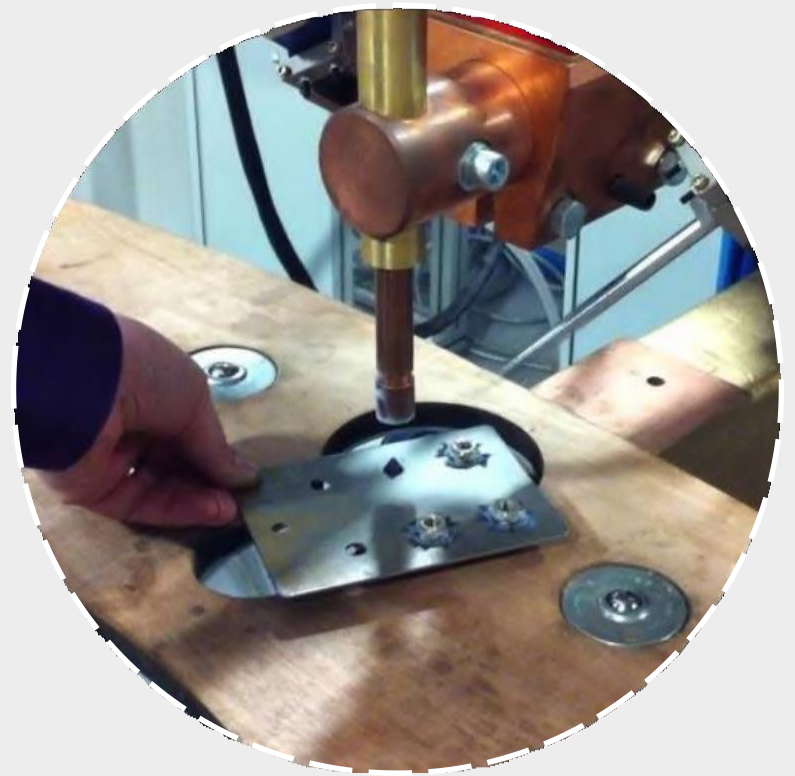
1

Spot welding



2

MIG Welding



3

Projection



Infrastructure

Towards Quality Improvements ,
recently we have
renovated our
Standards Room
Facility.



Infrastructure

Infrastructure
improvement for
capacity
Consumable store
renovated for better
management



Infrastructure

2500 sq ft additional
covered space created
for a new line to be
added



Infrastructure

We have installed L.E.D. Lighting system through our company for better LUX Level



Infrastructure

3 sources of electricity
input for continuous
supply



Feeder

introduction of feeder
which helped us in
increasing the rate of
production



PACKING STANDRIZATION

introduced pressure
free packaging
machine to avoid
any kind of
human error



PNEUMATIC GAUGING SYSTEM

**in house made
gauging system to
increase the speed
with 100% gauging**





Sangeeta Industries

Thank You for Watching our Presentation

Call Us:-

- Prithvi Dhingra - Managing Director
- SS Yadav +91 9999716589 – Operations

Visit Us:-

Sangeeta Industries
Plot # 109, Sector 25, Faridabad, Haryana - 121004

Write to Us:-

sangeetaindustries@rediffmail.com,

View Us:-

website : www.sangeetaindustries.com